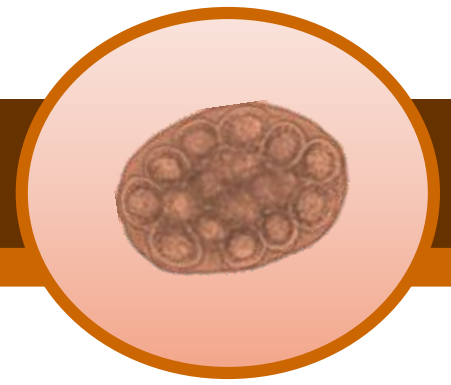


Tapeworm



What is Tapeworm?

Tapeworm are another intestinal parasite that can infect your dog or your cat. They are flat, long worms that are made up of segments. There are several different species of tapeworm which can infect your pet. Each species has a different intermediate host, which your pet must ingest, in order to become infected.

Dipylidium caninum is a tapeworm that uses fleas as its intermediate host, whereas *Taenia* and *Echinococcus* species use small rodents (mice, rats, squirrels), rabbits, or large animals (such as deer or sheep) as their intermediate hosts.

How is Tapeworm diagnosed?

Tapeworm is usually diagnosed by finding segments (that appear like small white worms or rice), on your dog or cats rear end, in their feces, or where they sleep. Tapeworm may also be diagnosed on a routine fecal evaluation, but false negatives are possible.

Symptoms of Tapeworm

Symptoms of tapeworm include finding tiny white worms on your pets rear end, weight loss despite a good appetite, "scooting", and rarely vomiting.

Treatment of Tapeworm

Treatment of tapeworm involves the administration of a prescription medication. Most of these medications will also deworm your pet for other potentially harmful intestinal parasites. Keeping your pet on flea prevention may also help to prevent your pet from getting tapeworm.

